

## DIAPHRAGM SENSING PRESSURE REDUCING VALVE PRV 30SS DN 1" – 1 1/4"; DN25 – DN32

### DESCRIPTION

The ADCA PRV30 series **direct acting, spring-loaded diaphragm sensing, balanced valve** pressure reducing valves, are designed for use on compressed air, water and other gases or liquids compatible with the materials of construction.

They are suitable for pressure reducing stations at the point of use on laundry machines, dyeing, food industries, sterilizers, etc.

### MAIN FEATURES

Compact design.  
Balanced valve.



### OPTIONS:

Different soft valves for water and gases.  
Relieving-Internal relief valve to allow reduce outlet pressure in a no-flow condition.  
Outlet 1/4" gauge connection on body.  
Regulating screw with top cap.

PN40

PN63

### USE:

Compressed air, water and other gases and liquids compatible with the construction.

### AVAILABLE MODELS:

PRV30/SS – Stainless steel.

### SIZES:

DN 1" and DN 1 1/4"  
DN 25 and DN 32

### CONNECTIONS:

Female screwed ISO7/1Rp(BS 21) or NPT.  
Flanged EN1092-1 PN40-PN63.  
Special flanges upon request.

### INSTALLATION:

Horizontal installation.  
An "Y" strainer should be provided upstream the valve.  
See IMI, installation and maintenance instructions.

### ORDER

### REQUIREMENTS :

Type of fluid  
Maximum operating temperature  
Inlet pressure and required outlet pressure  
Capacity (maximum and minimum).

CAPACITIES		
Valve Size	25	32
KVs (m3/h)	6,5	7,2

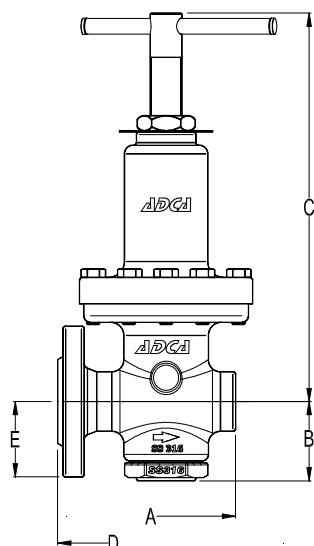
LIMITING CONDITIONS	
Valve model	PRV30SS
Body design conditions	PN 63
Max.upstream pressure	50 bar
Max.downstream pressure	15 bar
Min.downstream pressure	0,2 bar
Max.design temperature *	80 °C
Max.recommended reducing ratio	40:1

\*Other on request.

CE MARKING (PED - European Directive 97/23/EC)	
PN 16 - PN 63	Category
DN 25 to 32	SEP - art. 3, paragraph3

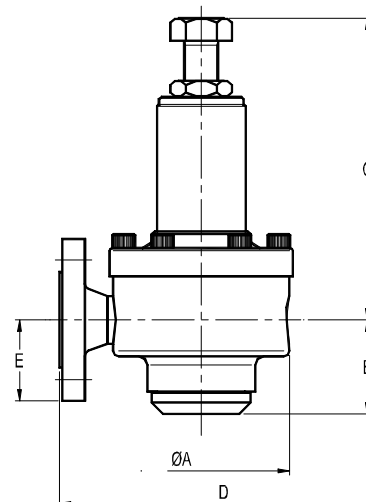
DIMENSIONS (mm) - CASTED VERSION							
Screwed				Fig. PN16/40			
SIZE DN	A	B	C	WGT. Kgs	D*	E	WGT. Kgs
1"-25	105	60	295	5,6	160	57,5	8,2

\* Different lenghts on request.



DIMENSION (mm) - BARSTOCK VERSION										
Screwed					Fig. PN16/40			Fig. PN63/100		
SIZE DN	A	B	C	WGT. Kgs	D*	E	WGT. Kgs	D*	E	WGT. Kgs
1"-25	125	66	285	5,7	230	57,5	8,3	230	70	10,3
1 1/4"-32	125	66	285	5,7	260	70	8,6	260	77,5	12,2

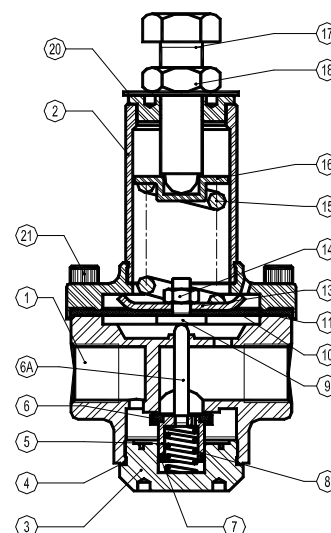
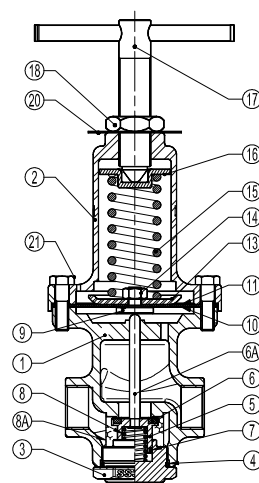
\* Different lenghts on request.



MATERIALS		
POS.	DESIGNATION	MATERIAL
1	VALVE BODY	AISI316 / 1.4401 ; CF8M / 1.4408
2	TOP COVER	AISI316 / 1.4401 ; CF8M / 1.4408
3	SEAT COVER	AISI316 / 1.4401 ; CF8M / 1.4408
4	* O-RING	NBR
5	* PISTON VALVE	AISI316 / 1.4401
6	* VALVE HEAD	NBR-EPDM-PTFE,etc
6A	PUSHRD	AISI316 / 1.4401
7	* O-RING	NBR-EPDM-PTFE,etc
8	* VALVE SPRING	AISI302 / 1.4300
8A	* STRAINER SCREEN	AISI304 / 1.4301
9	PUSHER DISC	AISI304 / 1.4301
10	* DIAPHRAGM	PTFE
11	* DIAPHRAGM	**NBR
13	SPRING PLATE	AISI304 / 1.4301
14	NUT	ST.STEEL A2-70
15	* ADJUSTMENT SPRING	SPRING STEEL
16	TOP SPRING PLATE	BRASS
17	ADJUSTMENT SCREW	AISI304 / 1.4301
18	LOCKNUT	ST.STEEL A2-70
20	SPRING IDENT. PLATE	ALUMINIUM
21	BOLTS	ST.STEEL A2-70

\* Available spare parts. \*\* Stainless steel on request .

Remarks: All valves have a serial number. In case of non-standard valves this number must be supplied if spare parts are ordered.



# ORDERING CODES PRV30SS

Valve Model	R30	.	1	W	N	C	R	.	15
PRV30SS - Diaphragm sensing	R30								
Outlet spring range									
Nº1 - 0,2 to 1,5 bar			1						
Nº2 - 0,3 to 3 bar			2						
Nº3 - 0,8 to 8 bar			3						
Nº4 - 1,5 to 15 bar			4						
Aplication									
Water				W					
Gases				G					
Oxygen (Degreased)				O					
Seal material									
NBR					N				
EPDM					E				
PTFE					T				
FPM/VITON					V				
Maximum inlet pressure									
30 bar						C			
50 bar a)						D			
Diaphragm material									
Stainless steel (Non-relieving)							S		
Rubber/PTFE (Relieving or non-relieving)							R		
Gauge port 1/4"									
Without gauge ports								(1)	
Gauge port on the left side (Related to the flow direction)								4	
Gauge port on the right side (Related to the flow direction)								3	
Gauge ports on both sides								2	
Relieving									
Non-relieving								(1)	
Relieving (Only for non-dangerous gases)								R	
Pipe connection									
Threaded BSP ISO 7/1 Rp								A	
Threaded NPT ANSI B1.20.1								C	
Socket weld SW ANSI B16.11								H	
Butt weld BW ANSI B16.25								I	
Flanged EN1092-1 PN40								N	
Flanged EN1092-1 PN63								O	
Flanged ANSI B16.5 150#								U	
Flanged ANSI B16.5 300#								V	
Flanged ANSI B16.5 600#								W	
Size									
DN 1" or DN 25									25
DN 1 1/4" or DN 32									32
....									
Special valves / Extras b)									
									E

(1) Omitted if a standard valve is requested

a) The 50 bar inlet available only with spring Nº4

b) Full description or additional codes have to be added in case of non-standard combination.