

PISTON SENSING PRESSURE REDUCING VALVE P 20P (Low flow) DN 1/4"

DESCRIPTION

The ADCA P20P series **direct acting, spring-loaded piston sensing**, pressure reducing valves, are designed for use on compressed air and other gases or liquids compatible with the materials of construction . They are suitable for low flow pressure reducing in instrumentation systems among others. Connections are female screwed.

MAIN FEATURES

Compact design.
Machined from barstock materials
No rising handwheel
Ultrasonically cleaned and degreased



OPTIONS:

Different soft valves for liquids and gases.
Relieving – internal relief valve to allow reduce outlet pressure in a no-flow condition.
Relieving – captured vent below panel
Panel mounting ring
Bottom mounting
Outlet 1/4" gauge connection on body.

USE:

Compressed air, water and other gases and liquids compatible with the construction.

AVAILABLE MODELS:

P20P – Stainless steel piston sensing

SIZES:

DN 1/4"

CONNECTIONS:

Female screwed ISO7/1Rp(BS 21) or NPT.
Special connections on request

INSTALLATION:

In any position
An upstream strainer should be provided in case of dirty fluids usage.
See IMI, installation and maintenance instructions.

ORDER

REQUIREMENTS :

Type of fluid
Maximum operating temperature
Inlet pressure and required outlet pressure
Capacity (maximum and minimum).

CAPACITIES

Valve Size	1/4"	1/4"	1/4"
KVs (m3/h)	0,043	0,22	0,62

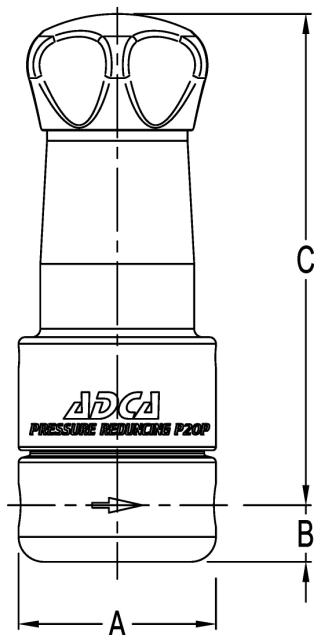
LIMITING CONDITIONS

Valve model	P20P
Body design conditions	PN 320
Max.upstream pressure	220 bar
Max.downstream pressure	200 bar
Min.downstream pressure	0,2 bar
Max.design temperature *	80 °C
Max.recommended reducing ratio	40:1

*Other on request.

CE MARKING (PED - European Directive 97/23/EC)

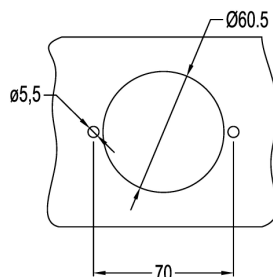
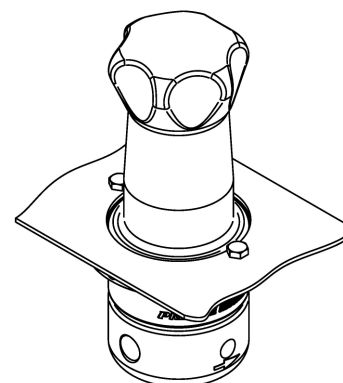
PN 320	Category
DN 1/4"	SEP - art. 3, paragraph3



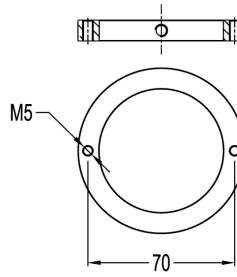
DIMENSIONS (mm)						
Screwed						
SIZE DN	A	B	C	d*	d1*	WGT. Kgs
1/4"	59	17	148	1/8"-1/4"	1/8"-1/4"	2,5

* Optional: pressure gauge or captured vent connection.

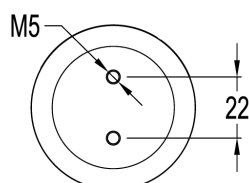
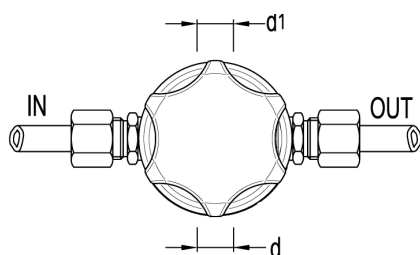
Panel mounting



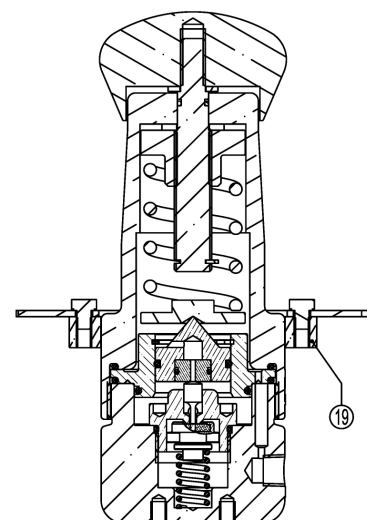
Panel cut-out



Ring



Bottom mounting



MATERIALS		
POS.	DESIGNATION	MATERIAL
1	VALVE BODY	AISI316L / 1.4404
2	TOP COVER	AISI316L / 1.4404
3	* VALVE HEAD	NBR-EPDM-PTFE,etc
4	* VALVE SPRING	AISI302 / 1.4300
5	PUSHROD	AISI316L / 1.4404
6	* O-RING	NBR-EPDM-PTFE,etc
7	PISTON SLEEVE	AISI316L / 1.4404
8	* O-RING	NBR-EPDM-PTFE,etc
9	* O-RING	NBR-EPDM-PTFE,etc
10	PISTON	AISI316L / 1.4404
11	* O-RING	NBR-EPDM-PTFE,etc
12	SPRING PLATE	AISI316L / 1.4404
13	* ADJUSTMENT SPRING	SPRING STEEL
14	TOP SPRING PLATE	AISI316L / 1.4404
15	ADJUSTMENT SCREW	AISI316L / 1.4404
16	RETAINING RING	ST.STEEL A2-70
17	* O-RING	NBR-EPDM-PTFE,etc
18	HANDWHEEL	AISI316L / 1.4404
19	** PANEL MOUNTING RING	AISI316L / 1.4404

* Available spare parts. ** Optional

Remarks: All valves have a serial number. In case of non-standard valves this number must be supplied if spare parts are ordered.

