

PULSEPARATOR METAL SEPARATOR



The Pulseparator range of Electronic Metal Separators removes both ferrous and non-ferrous metal contamination from gravity fed bulk materials.

PULSEPARATOR
INDUSTRIAL METAL SEPARATORS

Models and Capacities

50mm and 100mm diameter aperture models are available, which will typically process 1000Kg/hour to 4000Kg/hour of granular material respectively.

Associated Products

- Other metal separators with greater sensitivities and larger diameter throughputs
- Underbelt and overband metal detectors
- Magnetic separators including Magnetic Hoppagrids, Tube, Grate and Plate Magnets

Features and Benefits

- Compact design
- High speed diverter - rejects minimum amount of product with metal
- High sensitivity - 1mm sphere (50mm model)
- No product effect - will handle both conductive and non-conductive material
- Simple to install
- Easy to set up

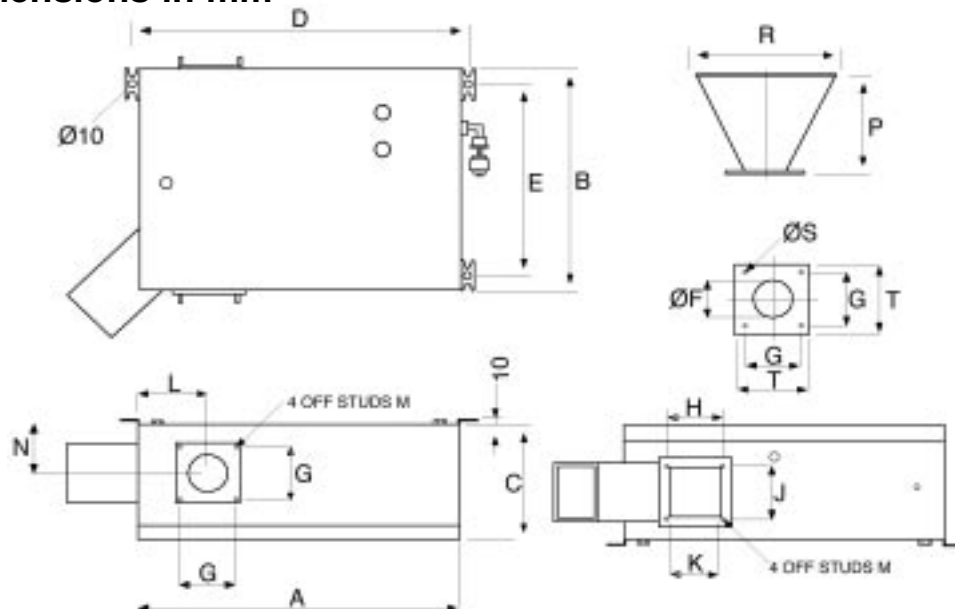
Applications

Used for protection of machinery and for checking product quality in industries such as:

- Plastics
- Food
- Bulk Handling
- Recycling

PULSEPARATOR METAL SEPARATOR

Dimensions in mm



	Pulseparator 50	Pulseparator 100		Pulseparator 50	Pulseparator 100		Pulseparator 50	Pulseparator 100
A	380	380	G	72	130	N	65	90
B	300	380	H	75	130	P	255	205
C	155	210	J	50	130	R	350	350
D	410	410	K	52	92	S	6	8
E	246	326	L	90	115	T	100	160
F	50	100	M	M5 x 14	M6 x 18			

Specification

Electrical

- Voltage supply 110V/220V
- Power 3 VA approx consumption
- Self monitoring Permanent monitoring function of sensor, air pressure, power supply and mechanics
- Outputs 'Detect' and 'Fault' relays
- Rejection time Adjustable from approx 0.1 to 1.0 sec
- Sensitivity Pulseparator 50 1mm Ferrous sphere
Pulseparator 100 2mm Ferrous sphere

Mechanical

- Protection IP55
- Temperature Max 70°C
- Material speed Maximum height of free fall approx 600mm
- Pneumatic supply 5 Bar (72.5 psi)
Integral filter regulator, water bleeder and lifetime lubricated pneumatics
- Air consumption Approx 0.1 litre per rejection process
- Housing Steel, finished orange (RAL 2011) or Stainless Steel 316
- Parts in contact with material *Steel Unit* Polyethylene in the sensor area
Anodised aluminium in the rejection area
Stainless Steel Unit Polyethylene in the sensor area
Stainless Steel 316 in the rejection area
Seal Material In both cases Polyurethane
- Throughput Pulseparator 50 1000 Kg/h
Pulseparator 100 4000 Kg/h
Subject to flow characteristics of material.
Given amounts refer to virgin materials.

Eriez Magnetics Europe Limited
European Manufacturing, Design and Test Laboratory Headquarters
Bedwas House Industrial Estate, Bedwas, Caerphilly CF83 8YG, UK

Telephone: 029 2086 8501 Fax: 029 2085 1314
Int Tel: +44 29 2086 8501 Int Fax: +44 29 2085 1314
E-mail: eriez@eriezeurope.co.uk
www.eriez.com

