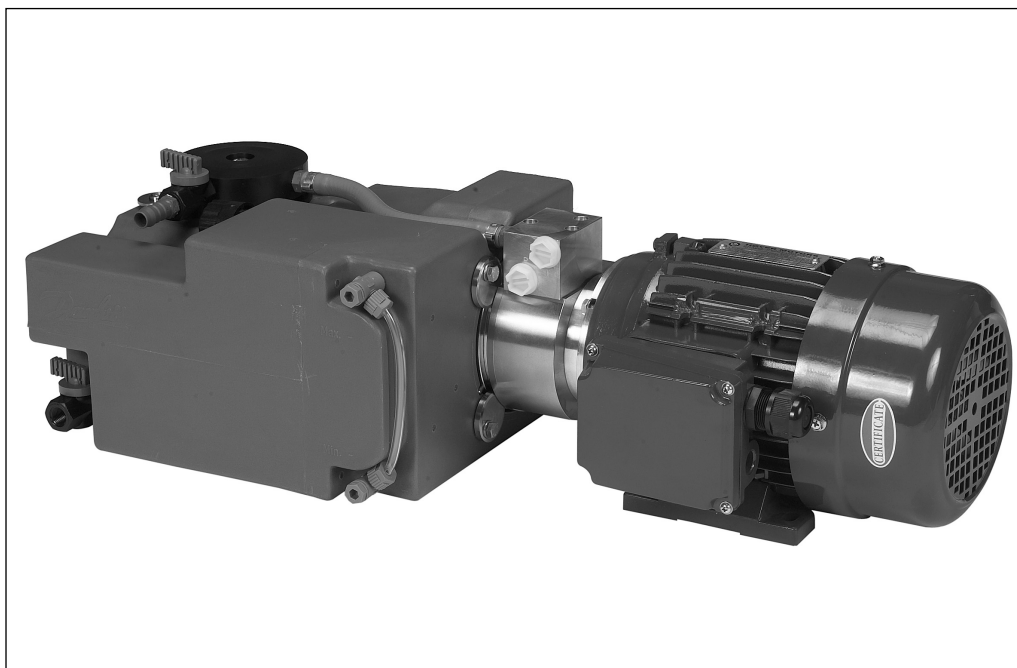


Data sheet and instruction

Data sheet and instruction for mini power pack PPHC



Mini power pack PPHC basis module

Data sheet for Mini power pack PPHC basis module

The power pack is corrosion resistant and ready-to-fit and based on a modular valve system.

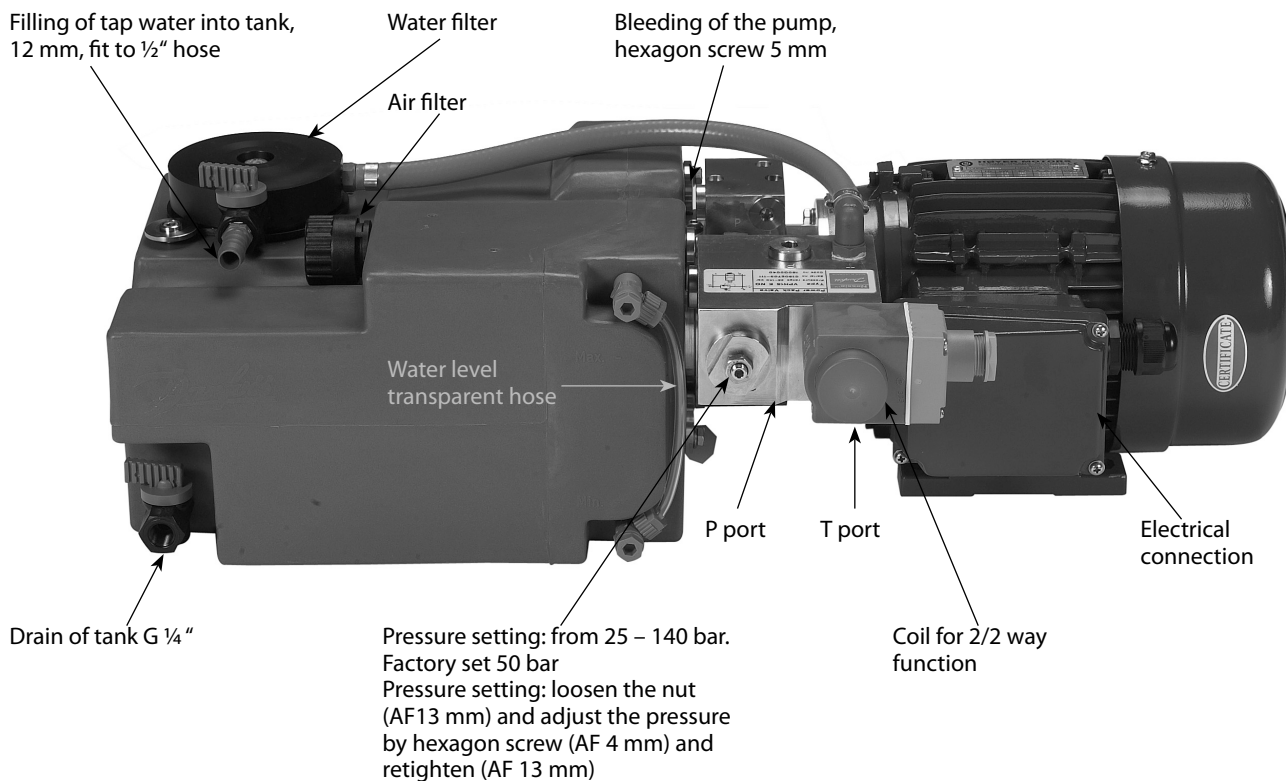
The Nessie® mini power pack can operate one single activated cylinder (basic version) and is extendable to operate several single or double activated cylinders.

Technical data

Electrical Motor	Power	Voltage	Rpm.	Comments
MS 8024 B14/B3	0.75 kW AC	3 × 230/400 V/50 Hz	1380 rpm.	OK
MS 90S4 B14/B3	1.1 kW AC	3 × 230/400 V/50 Hz	1390 rpm.	OK
MS 90L4 B14/B3	1.5 kW AC	3 × 230/400 V/50 Hz	1390 rpm.	OK
MS 90LA4 B14/B3	2.2 kW AC	3 × 230/400 V/50 Hz	1390 rpm.	OK
	0.9 kW DC	24 V DC	1800 rpm.	Option

Pump size	Flow (1380 rpm)	Max pressure	Tank net volume	Tank brutto volume	Weight
2 cm ³	2.0 l/min	100 bar	4 liter	6 liter	25 kg
4 cm ³	4.6 l/min	140 bar	4 liter	6 liter	25 kg
6,3 cm ³	7.4 l/min	140 bar	4 liter	6 liter	25 kg

Description of the mini power pack PPHC

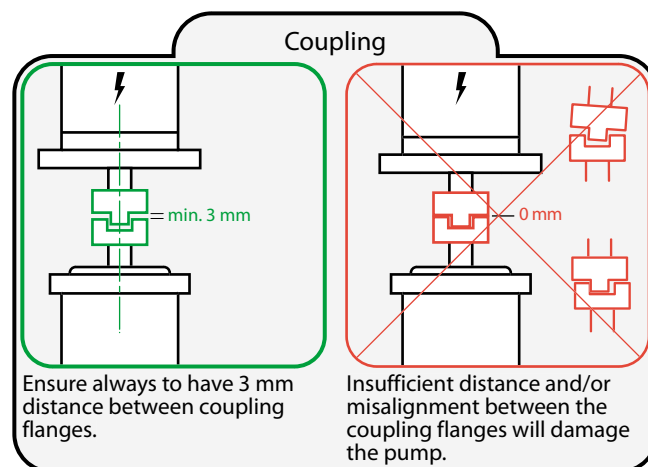
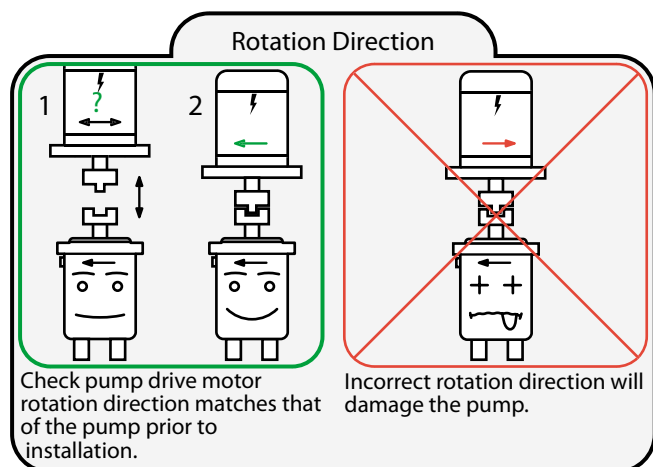


Note: Max. tightening torque for P and T port : 25 Nm

Important !!!!!

Fill up the tank above minimum with water, check the direction of rotation before start of the electrical motor and bleed the pump.

Direction of rotation of the electric motor

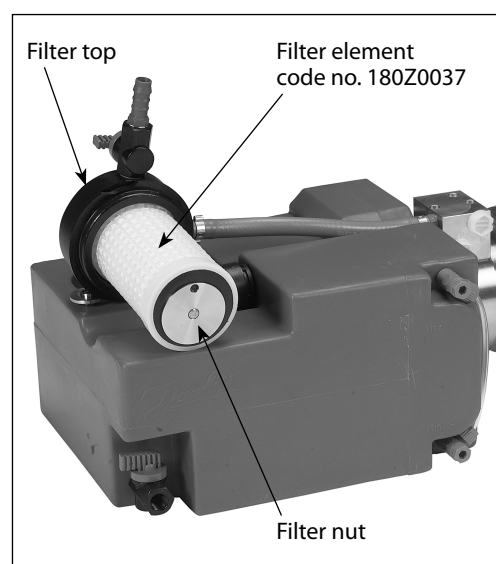


Filter change

Filter change:

Unscrew the filter top by turning this black top approximately 15 ° in CCW direction, now is it free from tank.

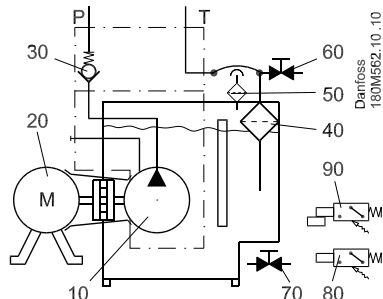
The element can now be unscrewed from the filter top by loosening the top screw (AF 13 mm). Fix a new element and retighten the filter again.



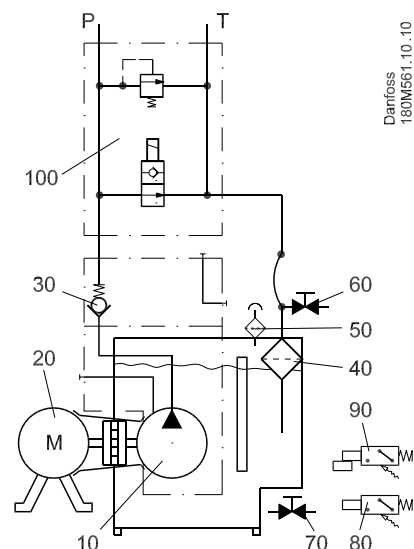
Hydraulic diagram

The hydraulic diagram is showing a basis mini power pack and a basis mini power pack incl. 2/2 way valve and a pressure relieve valve.

Basis unit
P : G 1/4"
T : G 1/4"



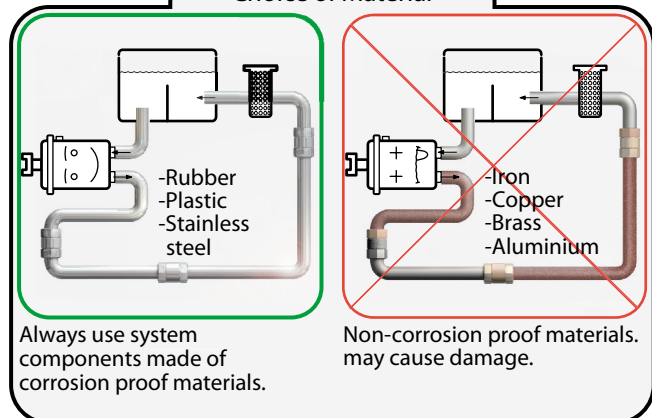
Basis unit
P : G 3/8"
T : G 3/8"



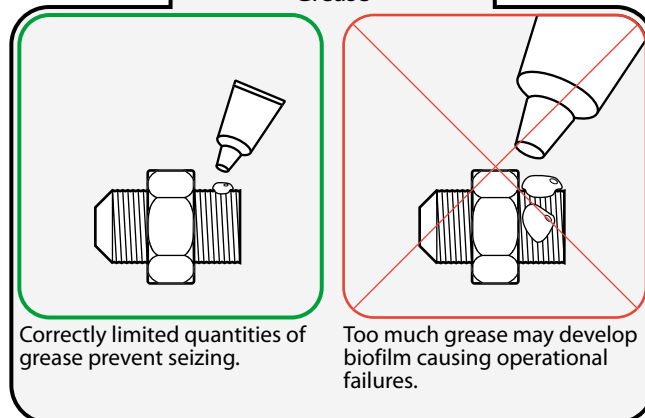
Positions numbers for diagrams

Pos.	Name
10	Pump
20	Electrical moto
30	Check valve
40	Water filter 5 inch
50	Air filter
60	Ball valve for filling up tank, drinking water connection 12 mm, fit in 1/2" hose
70	Ball valve for emptying the tank
80	Min level switch (option)
90	Temperature switch (option)
100	2/2 way valve incl. pressure relieve valve

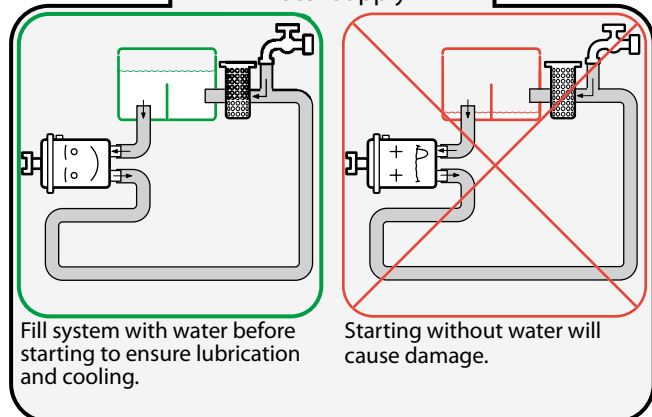
Choice of Material



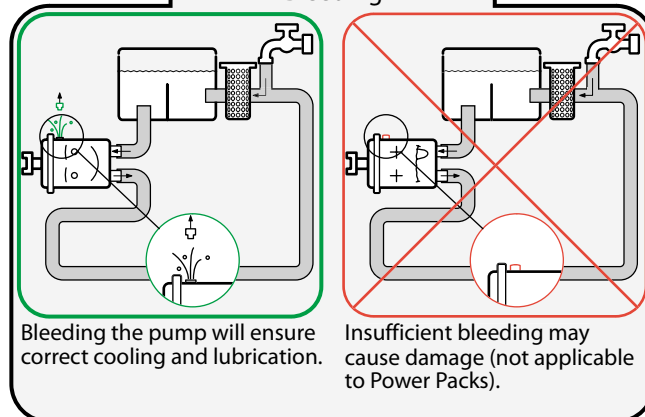
Grease



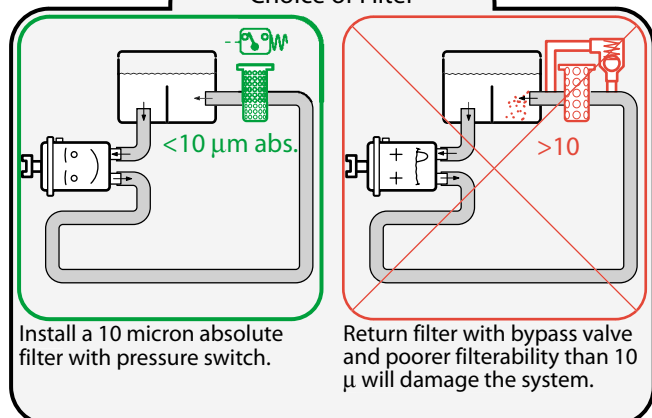
Water Supply



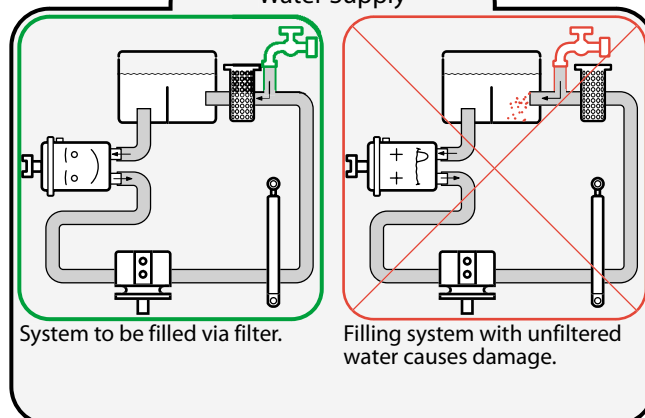
Bleeding

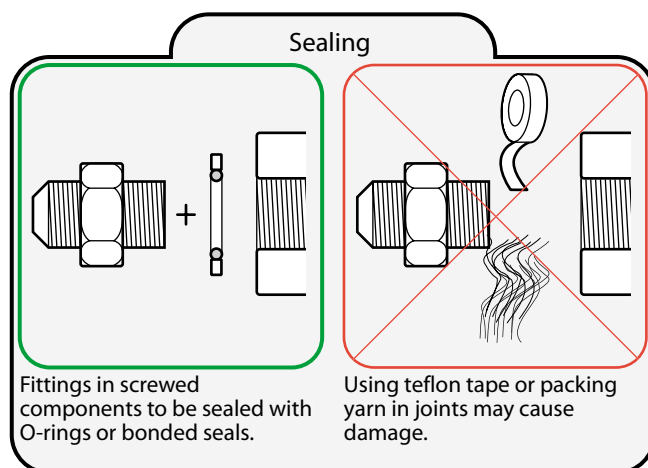
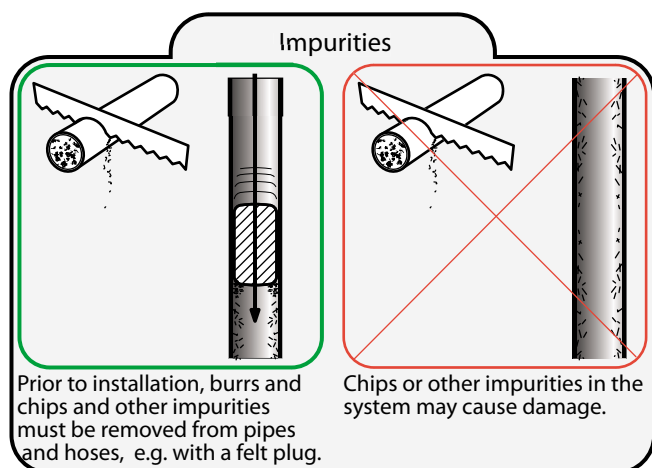


Choice of Filter

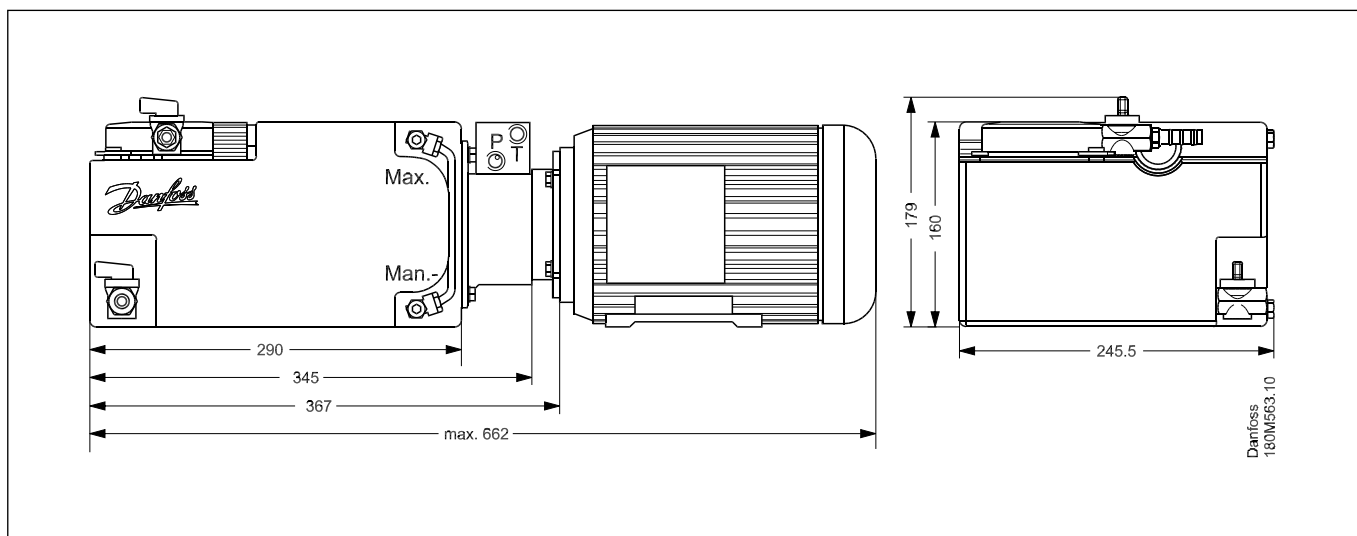


Water Supply





Dimensions on basis module



Danfoss can accept no responsibility for possible errors in catalogues, brochures and other printed material. Danfoss reserves the right to alter its products without notice. This also applies to products already on order provided that such alterations can be made without subsequential changes being necessary in specifications already agreed.
All trademarks in this material are property of the respective companies. Danfoss and the Danfoss logotype are trademarks of Danfoss A/S. All rights reserved.



**DK-6430 Nordborg
Denmark**